



58 Atwell Close

, Wallingford, OX10 0LZ

Guide price £339,500



A very well presented 2 bedroom house in a popular location within walking distance to town centre



Description

A very well presented 2 bedroom house in a popular location within walking distance to town centre.

Driveway parking to front with small garden leads to front door which opens into the reception hall. Spacious living / dining room which opens to the modern kitchen with electric oven and gas hob, door to rear.

Upstairs to good sized landing with airing cupboard and attic access

Double bedroom to rear with built in wardrobes and cupboard

Double bedroom to front Family bathroom with shower over bath, WC and basin.

Outside to Rear patio terrace and garden

Shed

Access to rear

Driveway parking

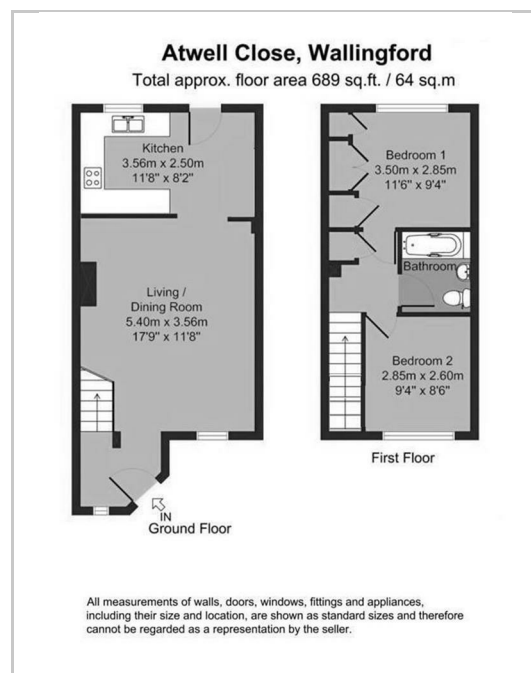
The property benefits from modern kitchen, flooring, gas central heating and modern double glazed windows making it a great home to move in and enjoy.

Wallingford town centre is a popular medieval market town with vibrant local shops, cafés, bars and restaurants, along with Waitrose and nearby Lidl. Wallingford is located within easy access to the M4, M40 and A34, Harwell campus and mainline stations can be found at nearby Cholsey and Didcot.

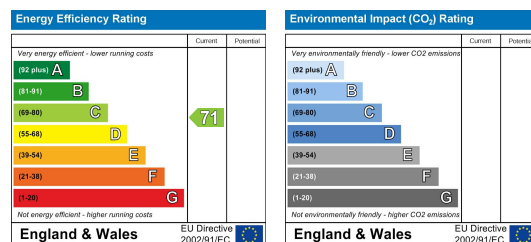
Area Map



Floor Plans



Energy Efficiency Graph



These particulars, whilst believed to be accurate are set out as a general outline only for guidance and do not constitute any part of an offer or contract. Intending purchasers should not rely on them as statements of representation of fact, but must satisfy themselves by inspection or otherwise as to their accuracy. No person in this firm's employment has the authority to make or give any representation or warranty in respect of the property.